

Agenda of the Erasmus+ TAURUS Public Workshop & Project Meeting,

Nanjing Forestry University (NFU), China

9 - 12 October 2018

1 st day	10/09/2018 Tuesday
Time	Event
12:00-18:00	Arrive at Nanjing, Accommodations at Hotel
18:00	Social dinner at Nanling Hotel
2 nd day	10/10/2018 Wednesday
8:30	Meeting at the Jinling Star Hotel lobby
9:00-9:30	<p>Meeting with the Vice president, International Cooperation Department and Dean of College of Biology and the Environment</p> <p>Hong Zhang, Vice-president of NFU</p> <p>Xinwu Xu, Director of International Affairs Office</p> <p>Shenzuo Fang, Director of science and Technology Division</p> <p>Jiangang Zhu, Dean of College of International Education</p> <p>Gao handong, Secretary, College of Biology and the Environment</p> <p>Xia Xu, Vice Dean, College of Biology and the Environment</p> <p>Yifan Duan, Vice Dean, College of Biology and the Environment</p>
9:30-12:00	<p>Public Workshop</p> <p>WP1: 1.2 Reviewing and learning EU experience in HEIs – Employers cooperation through study visits.</p> <p>Workshop: Comparative analysis of University & Employers collaboration in EU and China</p>
14:00-17:00	<p>Project meeting</p> <p>WP3: 3.1 Establishing the framework program to organize internships.</p> <p>Presentation of Internships Programmes for inclusion in the TAURUS platform (target: TAURUS partners)</p> <p>WP8: 8.3 Coordination meetings - Reporting progresses on the project activities & Steering Committee</p>
17:00-18:00	Visit the NFU Campus

Training Capacities in Agriculture and Urban Rural
Interactions and Sustainable development of Megacities

18:00	Welcome Banquet by NFU at Nanling Hotel
3 rd day	10/11/2018 Thursday
8:30	Meeting at the Jinling Star Hotel lobby
8:30-12:00	Visit of Bagua Islet in the Yangtze River (Urban agriculture, Urban and rural ecology etc)
12:00-13:30	Lunch
13:30-15:30	Visit Purple Mountain Scenic Spot, Zhongshan Botanical Garden and Confucian Temple,
18:00-	Dinner
4 th day	10/12/2018 Friday
	Transfer to Fuzhou

10/10/2018 Wednesday Public Workshop		
Time	Event	Speaker
9:00-9:30	Meeting with the Vice president, International Cooperation Department and Dean of College of Biology and the Environment	
9:30-9:50	International/Local internship experiences at University of Tuscia, with a special focus for the forestry & environmental sector	Paolo De Angelis
9:50-10:20	Jiangsu Nanlin Asia Olympics landscape architecture Co., Ltd.	Wuzhao Zhang
10:20-10:40	Agricultural universities and enterprises interaction development prospects in Russia	Ivan Vasenev
10:40-11:10	Urban ecological environment design: Exploration and practice of the Da Qian Ecological Landscape Co., Ltd	Xiaoxuan Chen
11:10-11:20	Tea Break	
11:20-11:40	Vertical Farm: Research on the Prospective Urban Agricultural Landscape	Qingping Zhang

Training Capacities in Agriculture and Urban Rural
Interactions and Sustainable development of Megacities

11:40-12:00		Jianming Xue
12:40-13:30	lunch	
10/10/2018 Wednesday Public Workshop Project meeting		
14:00-14:20	?	Viacheslav Vasenev(RUDN)
14:20-14:40	University and Enterprise interactions of Nanjing Forestry University: Practice and experience on forestry & environmental sector	Yuanchun Yu(NFU)
14:40-15:00	RSAU-MTAA research and education enterprise interactions as basis for internships in frame of TauRus	Ivan Vasenev
15:00-15:20		Xiangqing Ma
15:20-15:40	Voronezh State University Internship Programmes	Liliia Alaeva(VSU)
15:40-16:00	Forestry Education and Sustainable Development– A Customized Practice Model in Nanjing Forestry University”	Jianhggan Zhu
16:00-16:20	?	Jetse Stoorvogel
16:20-17:00	Discuss of the following project plan	
17:00-18:00	Visit of Campus	
18.00	Welcome Banquet at Nanling Hotel	

Contact

Yuanchun Yu: +86 13951010679; +86 25 85428810

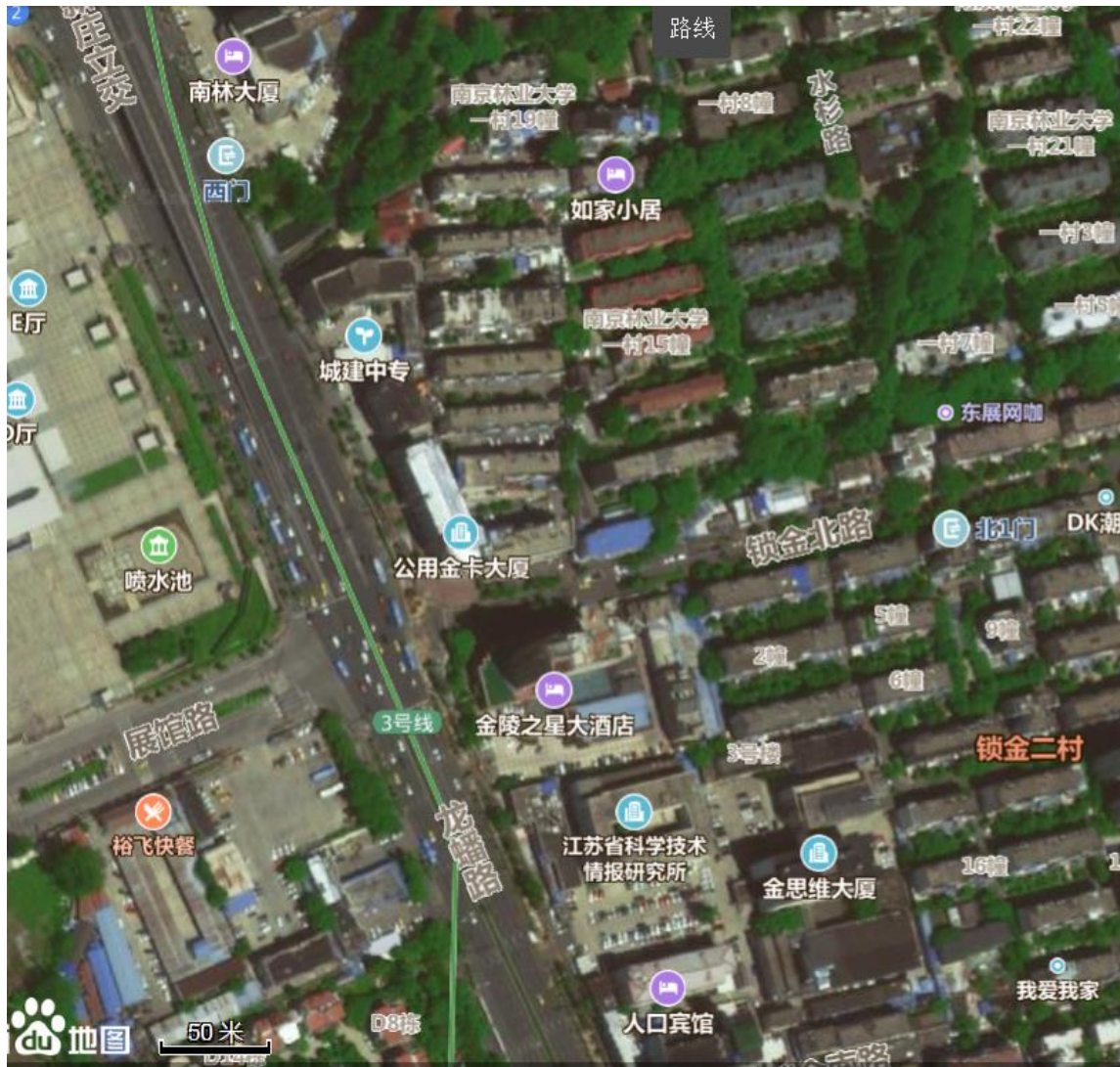
Email: ycyu@njfu.edu.cn; 122418810@qq.com

Accommodation

- (1) Jinling Star Metropole Hotel (<http://hotels.ctrip.com/hotel/604656.html>) 4Star
- (2) Nanjing Population Hotel

Conference Venue:

Training Capacities in Agriculture and Urban Rural
Interactions and Sustainable development of Megacities
Nanlin Hotel (Longpan Road 159, Nanjing, China)



About Nanjing City

Nanjing, formerly romanized as Nanking and Nankin, is the capital of Jiangsu province of the People's Republic of China and the second largest city in the East China region, with an administrative area of 6600 km² (2500 sq mi) and a total population of 8270500 as of 2016. The inner area of Nanjing enclosed by the city wall is Nanjing City (南京城), with an area of 55 km² (21 sq mi), while the Nanjing Metropolitan Region includes surrounding cities and areas, covering over 60000 km² (23000 sq mi), with a population of over 30 million.



Training Capacities in Agriculture and Urban Rural Interactions and Sustainable development of Megacities

Situated in the Yangtze River Delta region, Nanjing has a prominent place in Chinese history and culture, having served as the capital of various Chinese dynasties, kingdoms and republican governments dating from the 3rd century to 1949, and has thus long been a major center of culture, education, research, politics, economy, transport networks and tourism, being the home to one of the world's largest inland ports. The city is also one of the fifteen sub-provincial cities in the People's Republic of China's administrative structure, enjoying jurisdictional and economic autonomy only slightly less than that of a province. Nanjing has been ranked seventh in the evaluation of "Cities with Strongest Comprehensive Strength" issued by the National Statistics Bureau, and second in the evaluation of cities with most sustainable development potential in the Yangtze River Delta. It has also been awarded the title of 2008 Habitat Scroll of Honor of China, Special UN Habitat Scroll of Honor Award and National Civilized City. Nanjing boasts many high-quality universities and research institutes.

Nanjing has served as the capital city of Jiangsu province since the establishment of the People's Republic of China. It boasts many important heritage sites, including the Presidential Palace and Sun Yat-sen Mausoleum. Nanjing is famous for human historical landscapes, mountains and waters such as Fuzimiao, Ming Palace, Chaotian Palace, Porcelain Tower, Drum Tower, Stone City, City Wall, Qinhuai River, Xuanwu Lake and Purple Mountain. Key cultural facilities include Nanjing Library, Nanjing Museum and Nanjing Art Museum.

Nanjing Forestry University Campus

Training Capacities in Agriculture and Urban Rural
Interactions and Sustainable development of Megacities



Training Capacities in Agriculture and Urban Rural
Interactions and Sustainable development of Megacities

